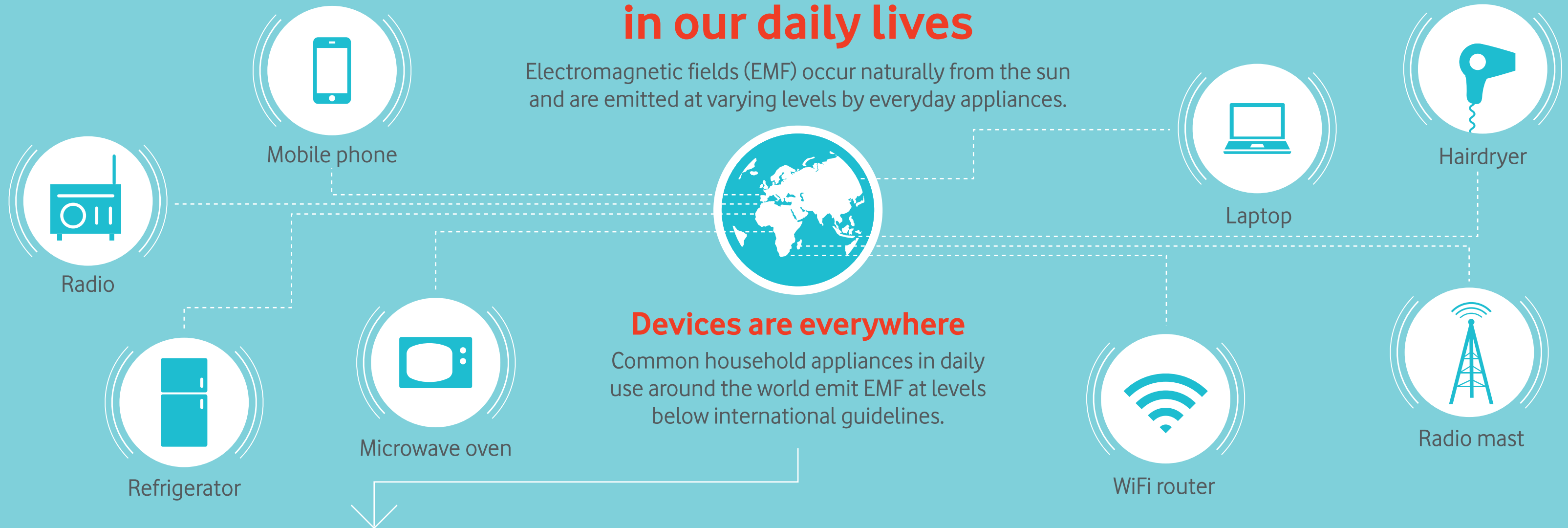


Electromagnetic fields in our daily lives

Electromagnetic fields (EMF) occur naturally from the sun and are emitted at varying levels by everyday appliances.

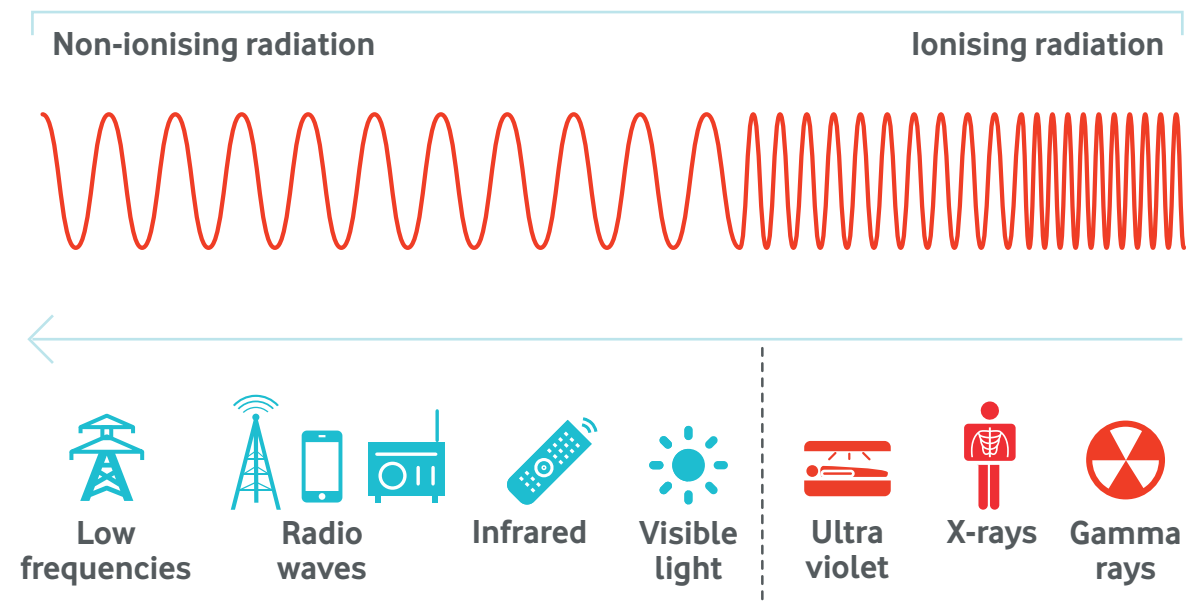


Devices are everywhere

Common household appliances in daily use around the world emit EMF at levels below international guidelines.

Monitored

Although these devices operate in the non-ionising part of the spectrum, they still produce heat. To protect people from over-heating, these devices are subject to strict regulations and closely monitored.



Part of history

In global use for decades, devices that create electromagnetic fields are subject to rigorous testing and include large safety margins.

